

DIEHL 5000 SERIES MOULDERS



Every 5000 Series moulder is built to your exact requirements, using standard heavy cast iron spindle configuration modules. This machine is not a commodity moulder retrofitted with various options in an attempt to accommodate your machining needs.



The heavy-duty design/construction allows for mounting large horsepower motors (up to 50 hp) used for high-speed production (up to 350 fpm), or deep-profile moulding.

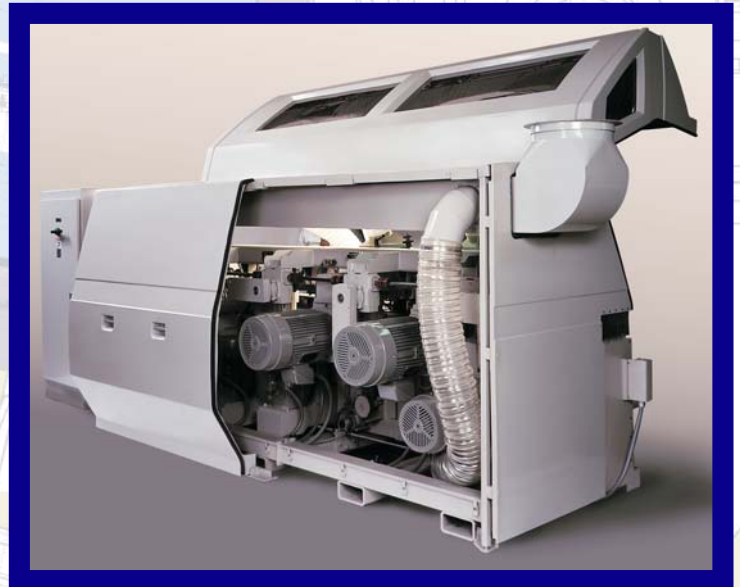


Each 5000 Series model is equipped with a complete enclosure for operator safety and noise abatement. An interior dust manifold, provided as a standard feature, reduces the length of each cutting head's dust connection, and requires only one external connection point. This reduces your installation costs, and greatly improves the dust collecting performance.



DIEHL MACHINES
Nobody Gives You More Choices.

DIEHL 5000 SERIES MOULDERS



The rear fiberglass enclosure panels are easily removed and allow complete access to the rear for performing general maintenance and routine cleaning.



An A.C. frequency inverter drive that includes 5 1/2" diameter feed rolls, is standard for applications up to 225 fpm, assuring smooth vibration-free feed system.



Hydraulic Drives are available for the more demanding applications and use 6 3/8" diameter feed rolls for feed speeds up to 350 fpm.



DIEHL MACHINES

Nobody Gives You More Choices.

DIEHL 5000 SERIES MOULDERS



Automatic jointers are available for high-speed applications and have smooth, vibration-free movement of the stone into the knives. The stone depth advance is infinitely variable by the operator, giving complete control in achieving "hair line" jointing.



Adjustable platens are provided at both the left and right side spindles for precise movement and quick adjustment to meet varying pattern depths.



Front mounted controls are accessible with the enclosure in either the open or closed position. To further ease the set up function, the enclosure door opens and closes automatically with the push of a button.



DIEHL MACHINES

Nobody Gives You More Choices.

DIEHL 5000 SERIES MOULDERS



The 5000 moulder can be provided with optional dual or triple upper and full width lower feed rolls to provide smooth, positive feeding of the stock. Also available is an "air dried" lumber feed package, enabling individual height adjustment for the lower feed rolls.



A shortened infeed table is available for high-speed operations using automated lateral chain-feed systems.



The infeed table can be extended for manual loading or for a magazine loading hopper.



DIEHL MACHINES

Nobody Gives You More Choices.

DIEHL 5000 SERIES MOULDERS



A centralized lubrication system, with grease fittings located convenient to the operator, assures easy access to all of the stationary grease points on the machine.



Better accessibility and larger cutterhead swings on the horizontal spindles offer the operator faster setups and greater profile flexibility.



Horizontal spindle outboard bearings, with axial adjustment, are available for achieving the perfect finish when machining either at high speeds or in challenging profiles.



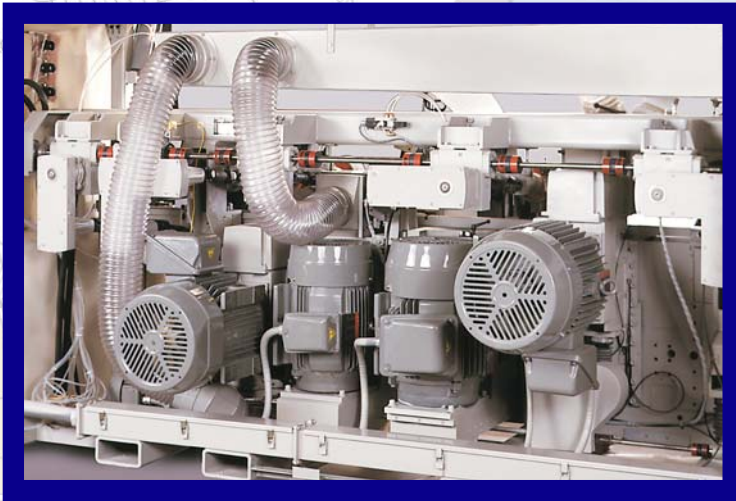
The Diehl "Quick-Set" pressure-shoe design guarantees the optimum pressure on every piece for the perfect finish. A split shoe is available for more complicated profiles.



DIEHL MACHINES

Nobody Gives You More Choices.

DIEHL 5000 SERIES MOULDERS



Common "commercially available" components are used whenever possible, giving you greater access to items required in servicing the moulder. Some typical component brands include: Rexroth, Alling-Landers, Parker, Bimba, Schrader-Bellows, Boston Gear, Duff-Norton and SKF.



A grooved bed stock guide system is available for applications where short stock or twisted stock is being processed.



Spring or Pneumatic holdover and chipbreaker groups are available to securely hold the stock while machining.



The operator's control panel uses colored illustrations, clearly directing the operator on all control functions. Manually activated electric spindle brakes are standard equipment.



DIEHL MACHINES

Nobody Gives You More Choices.